

GD-Series

LIEN YU

EURO INJ[®]

The Computerized
Injection Molding Machine



CE

Certificate No. 025-ET-1/2010
026-ET-1/2010



The New EURO D & G Series

EURO INJ D & G Injection Molding Machines

Both are suitable to produce the smaller, lighter,precious of electronic components demanding from users

Absorbing the innovative technology of plastic injection molding machine in last many years . The new D/G series are developed into high performance'

The new molding environmental engineering is also introduced into the new series to improve the low- noise, working stability ,efficient management to reduce the runing cost



Brief History of Company

NOV. 1985	Lien yu was established at his old factory
FEB. 1986	The first UF-1 series was built and into local market
MAY. 1986	Opened overseas markets in Hong Kong and Malaysia
JUN. 1987-JUN,1988	Built and moved to now sited factory.
JUN. 1988-MAY 1996	The first sino-british technical cooperation with A & A industrial Ltd in Taiwan. From the coopreation,we developed UF-II series of toggle and hydraulic mechanical clamping system into big machines.
MAY. 1997	We developed the D and E series for cost consideration
AUG. 1998	Expanded the factory from 4,000.0M2 TO 6,000.0M2
SEPT. 1998	Opened the 1st factory in Mainland China
OCT. 2002	The new D/G toggle types with high performance into market

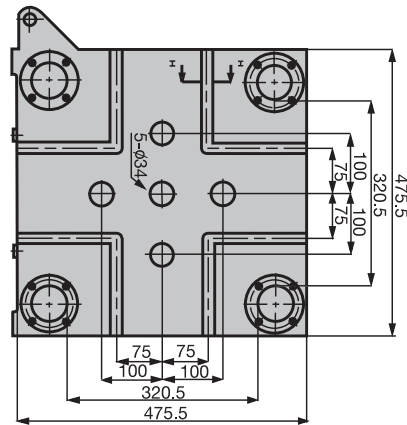
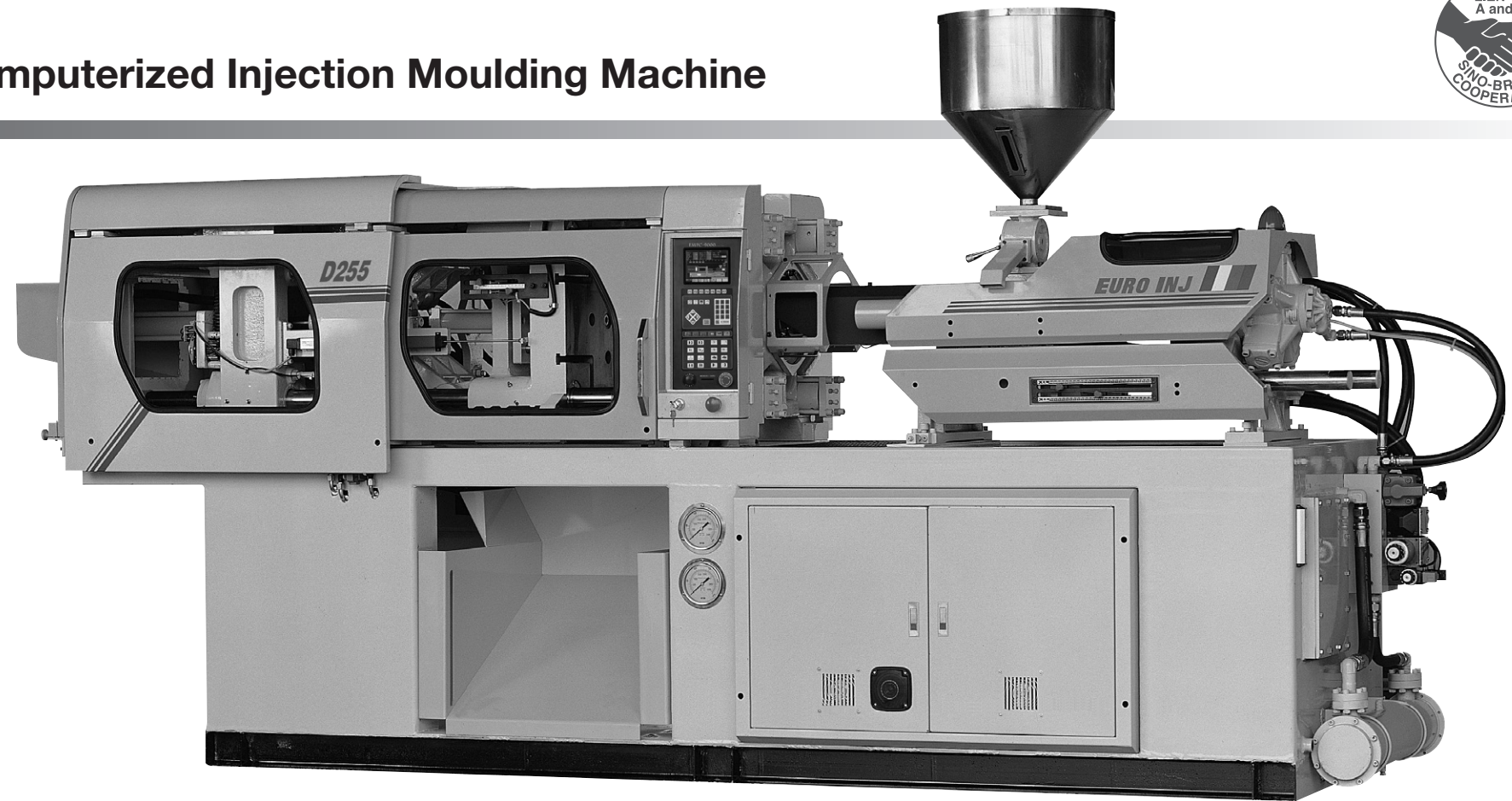
With all your supports in last many years, Lien Yu has established many overseas agents around the world.Therefore, you are welcome to contact with.

	Taiwan Factory	Mainland China
Capital	USD 2,000,000.00	USD 1,000,000.00
Employee	80	40
Factory	6000 M2	6000 M2
Producing Capacity	80-1600 TONS (800-16000 KN)	80- 650 TONS (800-6500 KN)
Monthly Capacity	60 Units	40 Units

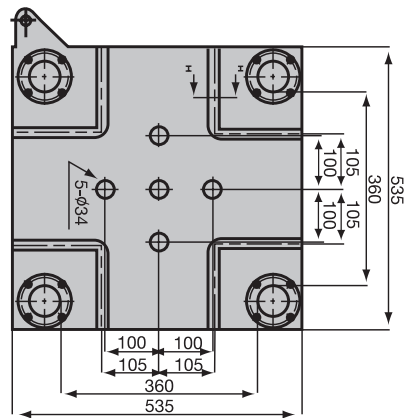


EURO INJ[®] The Computerized Injection Moulding Machine

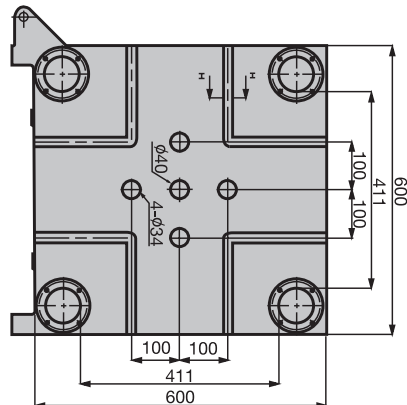
MODELS : D75 / D95 / D125 / D155 / D205 / D255



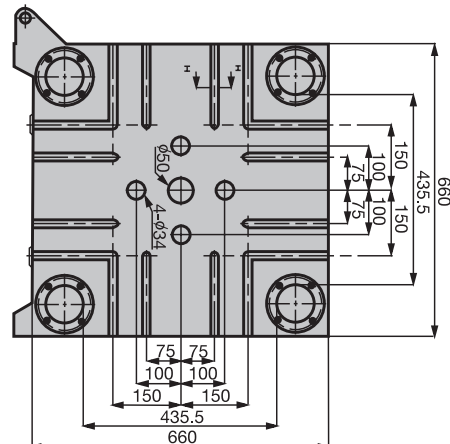
D75



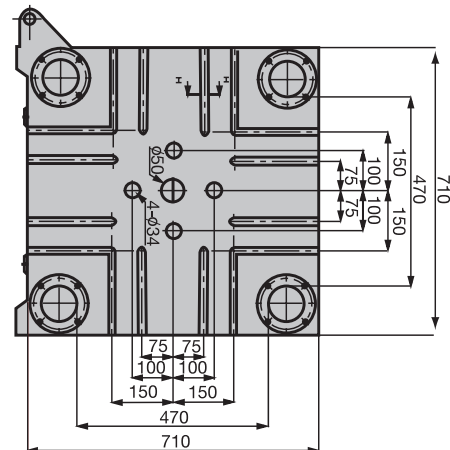
D95



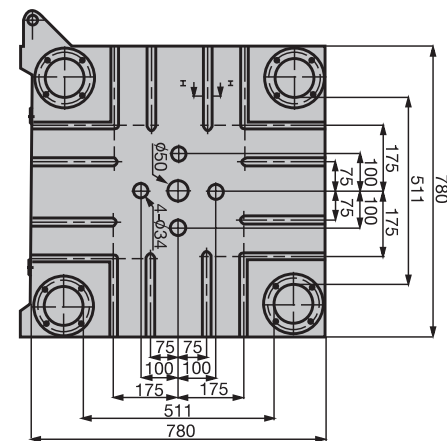
D125



D155



D205



D255

Specification:

	MODEL	Unit	D.75			D.95			D.125			D.155			D.205			D.255		
INJECTION	Screw Diameter	mm	28	32	36	32	36	40	36	40	45	40	45	50	45	50	55	50	55	60
	Screw L/D Ratio	L/D	22.8	20	17.8	22.5	20	18	22.2	20	17.77	22.5	20	18	22.2	20	18.1	22	20	18.3
	Swept Volume	cc	98	128	162	144	183	226	203	251	318	276	349	431	381	471	570	510	617	735
	Max shot Weight (P.S.)	g	88	115	146	130	164	203	183	226	286	248	314	388	343	424	513	459	555	661
		oz	3.1	4.0	5.1	4.5	5.8	7.1	6.4	7.9	10	8.7	11.1	13.7	12	14.9	18	16.2	19.6	23.3
	Max Injection Pressure	bar	2321	1777	1404	2180	1722	1395	2074	1680	1327	2104	1662	1346	2125	1722	1423	2046	1691	1421
	Max Injection Rate	g/sec	49	65	82	67	85	105	84	103	131	106	134	166	131	162	196	165	199	237
LOCKING	Screw Stroke	mm	160			180			200			220			240			260		
	Max Locking Force	tonne	75			95			125			155			205			255		
	Max Opening Stroke	mm	270			320			355			390			430			475		
	Min Mould Height	mm	100			130			130			150			150			150		
	Max Mould Height	mm	360			400			430			460			525			650		
	Max Daylght	mm	630			720			785			850			955			1125		
	Space between tie bars	mm	320 x 320			360 x 360			410 x 410			430 x 430			470 x 470			510 x 510		
	Diameter of tie bars	mm	55			60			70			80			90			100		
	Max Ejector forward Force	tonne	2.74			2.74			3.32			3.95			3.95			7.03		
	Max Ejector Stroke	mm	80			90			110			130			140			150		
GENERAL	Pump Drive Motor	kw (HP)	7.5(10)			11(15)			15(20)			18.5(25)			22(30)			30(40)		
	Hydraulic Pressure	bar	140			140			140			140			140			140		
	Heating Capacity	kw	4.0			4.6			6.5			7			8			10		
	Number of Heating Zones	qty	3+N			3+N			3+N			3+N			3+N			4+N		
	Oil Filling	liter	220			300			265			280			330			450		
	Machine Dimensions (LxWxH)	m	3.8 x 1.05 x 1.5			4 x 1.1 x 1.6			4.6 x 1.2 x 1.68			5.4 x 1.25 x 1.8			5.8 x 1.3x 1.9			6.2 x 1.35 x 2.0		
	Machine Weight, drv.	kas	3,500			4,300			5,600			6,500			7,500			10,000		

INJECTION WEIGHT=CALCULATED INJECTION VOLUME x GRAVITY SPECIFIC x 85%

- We Reserve The Right To Amend The Above Figure Without Prior Notice.



LIEN YU
LIEN YU MACHINERY CO.,LTD

NO.60, TAI EI 12 STREET TU KOU VILLAGE, JEN-TEH
HSIANG, TAINAN HSIEN, 717, TAIWAN
TEL:886-6-2724447, 2728446
FAX:886-6-2728023, 2725235
E-mail: euro.inj@msa.hinet.net
<http://www.lv-ini.com.tw>

EURO

D-Middle Size

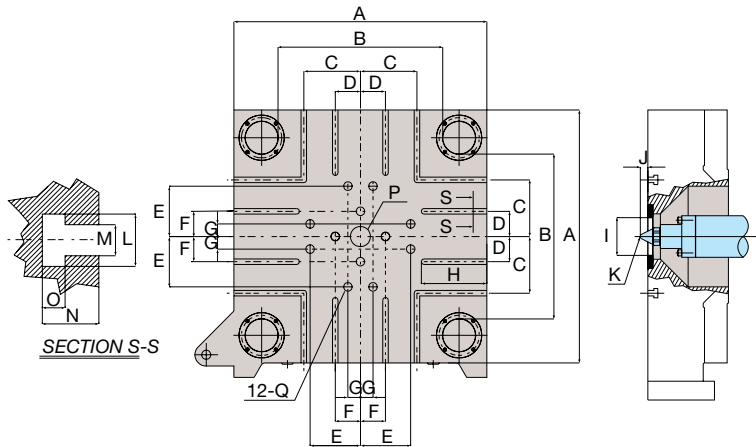
Injection Molding Machines (Toggle Type)

High Rigidity, Durability, Efficiency

There are thousand units of D-series toggle type in the world. They have showed to the users of their performance

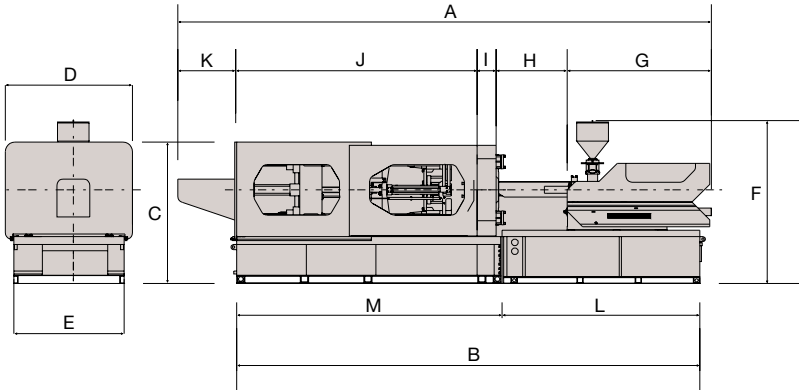
With the concept to reach higher standard, we spent all the cost in researching the molding technology to offer a fast, accuracy, reliability stability to user.(details will be introduced in next pages)

Platen Pattern



	A	B	C	D	E	F	G	H	I	J	K	L	M	N	O	P	Q
D305	850	560	200					200									
D355	940	610						230				34	20	33	14	φ80	φ34
D405	1005	660	225	100	200	100	50	260	φ150	30	R10						
D455	1120	760	250					300			R15	37	22	40	16	φ100	φ50
D555	1250	860	300	125				325									

Machine Measure



	A	B	C	D	E	F	G	H	I	J	K	L	M
D305	6580	5700	1960	1737	1470	2353	1790	865	270	3005	650		
D355	7149	6100	2045	1827	1560	2418	1940	964	280	2365	700		
D405	7740	6690	2150	1892	1625	2513	2100	1045	290	3505	800	2835	3885
D455	8472	7351	2135	2007	1740	2473	2275	1122	300	3851	915	3120	4195
D555	9640	8430	2137	2137	1870	2413	2500	1275	320	4445	1100	3530	4900

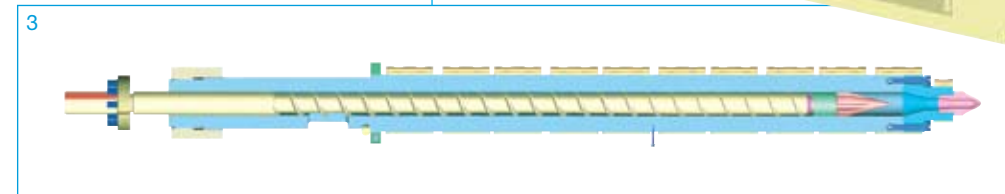
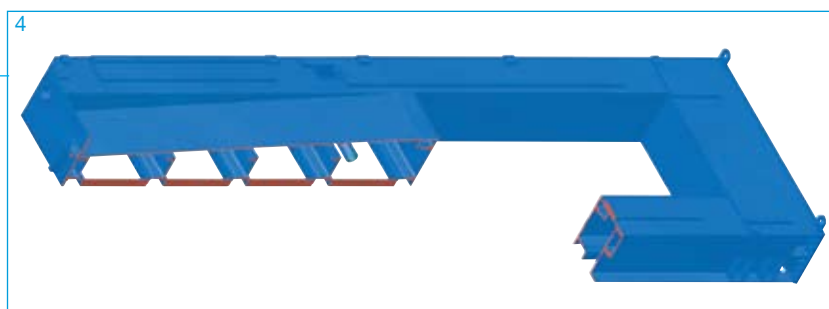
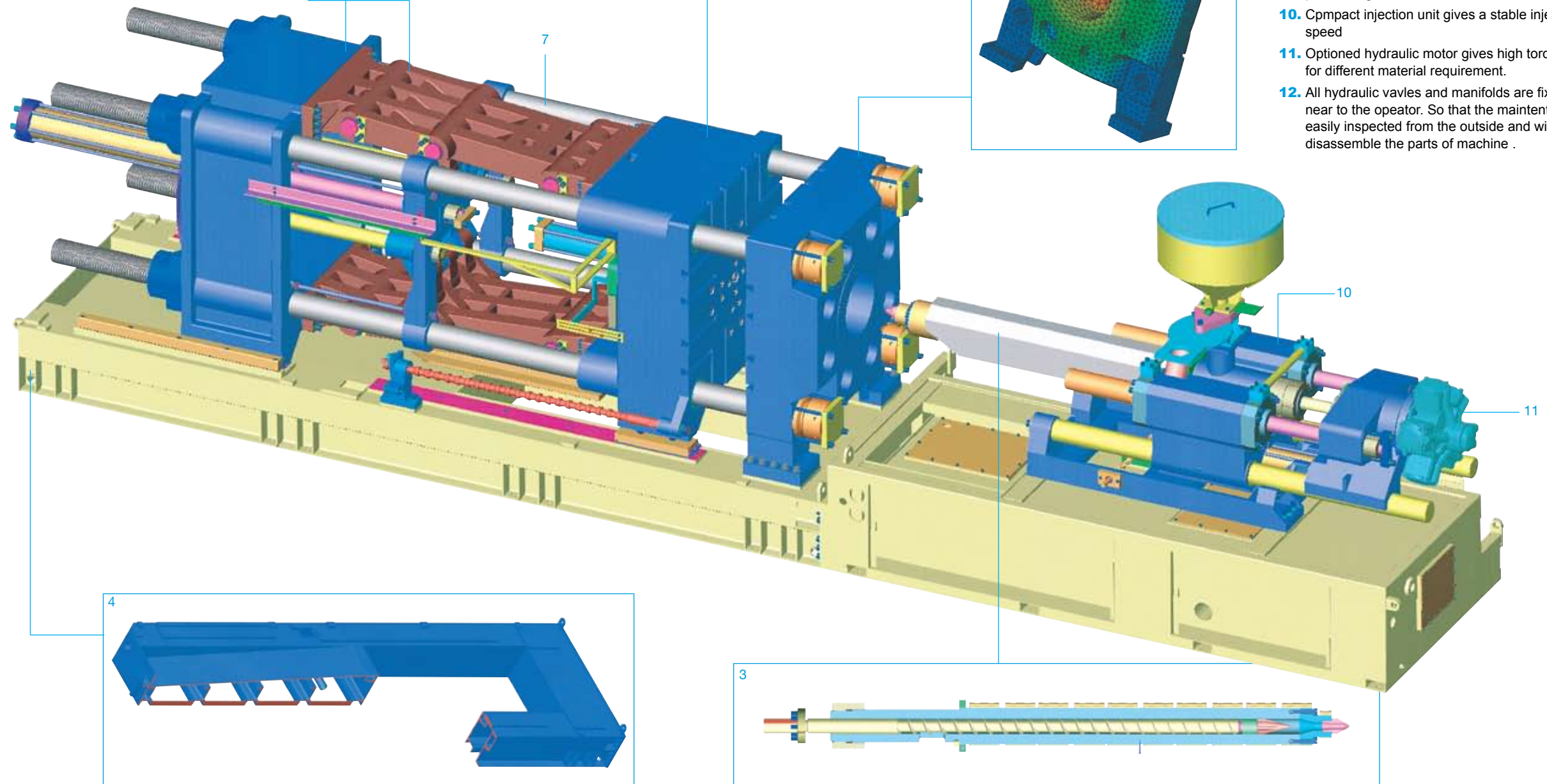
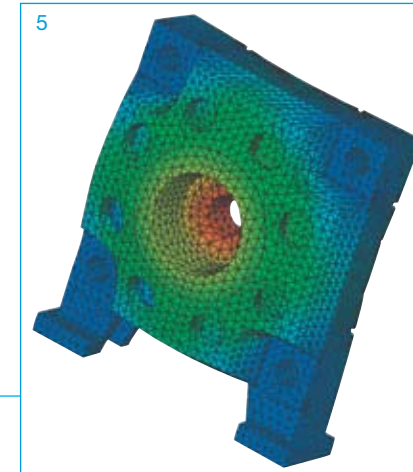
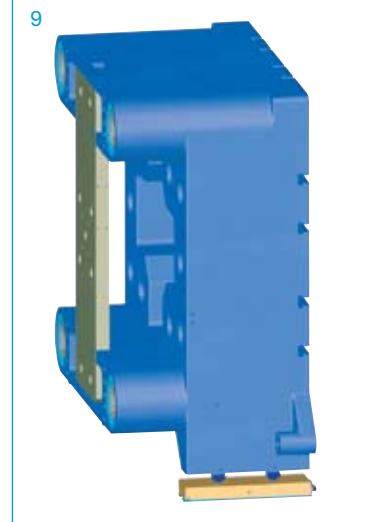
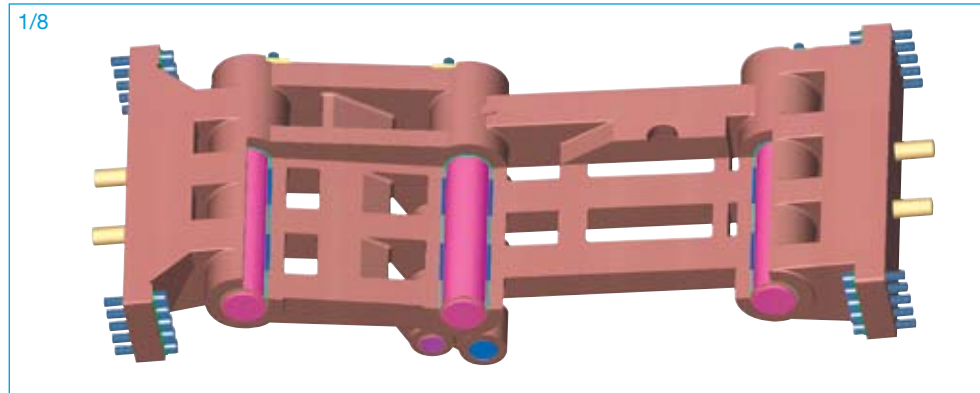


	Model	Unit	D.305			D.355			D.405			D.455			D.555		
Injection	Screw Diameter	mm	55	60	65	60	65	70	65	70	75	70	75	80	75	80	90
	Screw L/D Ratio	L/D	21.8	20	18.4	21.6	20	18.5	21.5	20	18.6	21.4	20	18.7	21.3	20	17.7
	Swept Volume	cc	665	791	929	876	1028	1193	1128	1308	1502	1423	1634	1859	1811	2060	2608
	Max shot Weight (P. S.)	g	589	712	836	788	925	1073	1015	1177	1351	1281	1471	1673	1630	1854	2347
		oz	21.1	25.1	29.4	27.8	32.6	37.8	35.8	41.5	47.6	45.2	51.8	59	57.5	65.4	82.8
	Max Injection Pressure	bar	1999	1680	1431	2022	1723	1485	1968	1697	1478	1872	1631	1433	2116	1860	1470
	Mas Injection Rate	g/sec	196	233	274	245	287	333	290	336	386	316	363	413	412	469	594
	Screw Stroke	mm	280			310			340			370			410		
Clamping	Max Locking Force	tonne	305			355			405			455			555		
	Max Opening Stroke	mm	520			590			640			700			900		
	Min Mold Height	mm	200			200			200			200			300		
	Max Mold Height	mm	700			750			800			900			1000		
	Max Daylight	mm	1220			1340			1440			1600			1900		
	Space between tie bars	mm	560 x 560			610 x 610			660 x 660			760 x 760			860 x 860		
	Diameter of tie bars	mm	110			120			125			130			145		
	Max Ejector forward Force	tonne	7.03			8.9			11			13.3			15.8		
	Max Ejector Stroke	mm	165			180			200			225			275		
General	Pump Drive Motor	kw (HP)	30 (40)			37 (50)			45 (60)			45 (60)			56 (75)		
	Hydraulic Pressure	bar	140			140			140			140			140		
	Heating Capacity	kw	13			16			19			22			25		
	Number of Heating Zones	qty	4+N			4+N			4+N			5+N			5+N		
	Oil Filling	liter	800			960			1100			1200			1300		
	Machine Dimension(LxWxH)	m	6.6 x 1.8 x 2.0			7.2 x 1.9 x 2.1			7.8 x 1.95 x 2.2			8.5 x 2.0 x 2.15			9.7 x 2.2 x 2.15		
	Machine Weight, dry.	kgs	12,000			14,500			17,500			21,000			28,000		

- InJection Weight=Calculated injection volume x gravity specific x 85%
- We reserve the right to amend the above figure without prior notice.

The New EURO D & G Series

EURO INJ D & G Injection Molding Machines



The New Philosophy of Injection Molding Technology.

1. Five-point toggle clamp provides a fast opening & closing
2. T-way of production drop hole for easy fixing the conveyor (only small machine)
3. Fine flow control concept is built-in the screw design giving a stable melting pressure and speed.
4. C / frame steel gives a super rigidity to the chassis and in reduces the weight
5. High rigid FCD45 cast steel
6. T slot platens for fast mold fitting
7. High Tensile steel tie bar with chromium-plated and precious grinding.
8. High density of steel bushing/enforced automatic lubrication system will prolong the toggle life..
9. Moving platen of sturdy box-type will reduce the deformation of platens and tie bars at injection is proceeding.
10. Compact injection unit gives a stable injection pressure/ speed
11. Optioned hydraulic motor gives high torque or fast speed for different material requirement.
12. All hydraulic valves and manifolds are fixed clearly near to the operator. So that the maintenance can be easily inspected from the outside and without having to disassemble the parts of machine .

The New EURO D & G Series

EURO IaNJ D & G Injection Molding Machines

Once you set, then every thing is finished.

The EMPC-9000 micro-computer based control system offers both high speed, yet simple operation. The display of both productions and engineering data with the latter being accessed by a password to prevent unauthorized access.

For normal operation there are eight screen pages of data and all main parameters such as speeds, pressures, strokes,time intervals and temperatures can be set on the screen.

As standard the internal memory can store data for up to twenty mould sets. To expand the mould storage data external memory cards can be supplied as optional equipment,each capable of storing data for twenty mould sets.

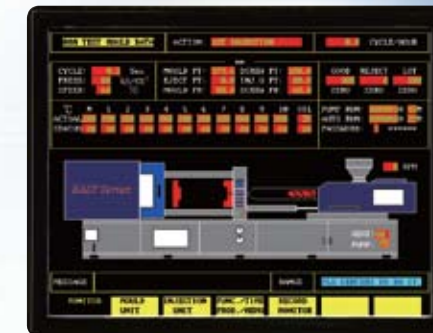
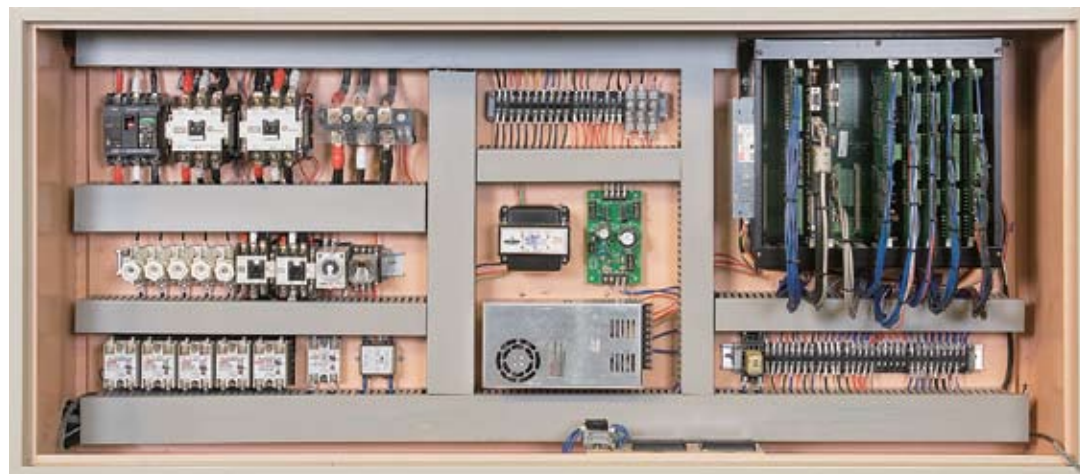
A voice synthesise is incorporated to give audible alarm messages.

A further 6 screen pages are installed to give the following functions:

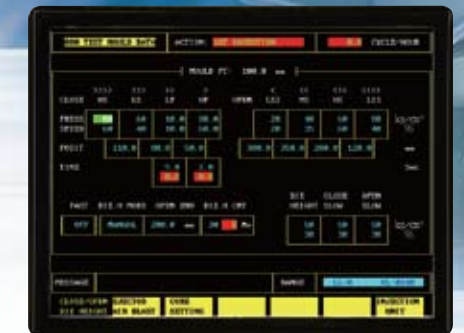
- Abnormal alarm analysis
- Input/output status
- Pre-heat timing
- Mould number allocation
- Print out setting (optional)
- Production quantity shut down

Optional features available:

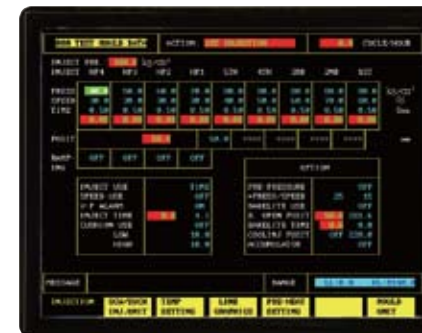
- Display screen of enlarged size and with colour CRT
- RS232 interface for connection to host computer
- External memory card
- Dynamic display of the machine hydraulic system including phase pressures etc.



EP00
Working status



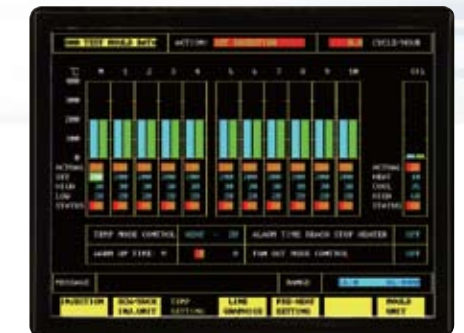
EP01
Molding open / close



EP04
Injection / holding



EP05
Charge / sucking back



EP06
Zones temp adjust



EP21
Spc record



EP03
Core pull / turn



EP02
Ejection / air blast